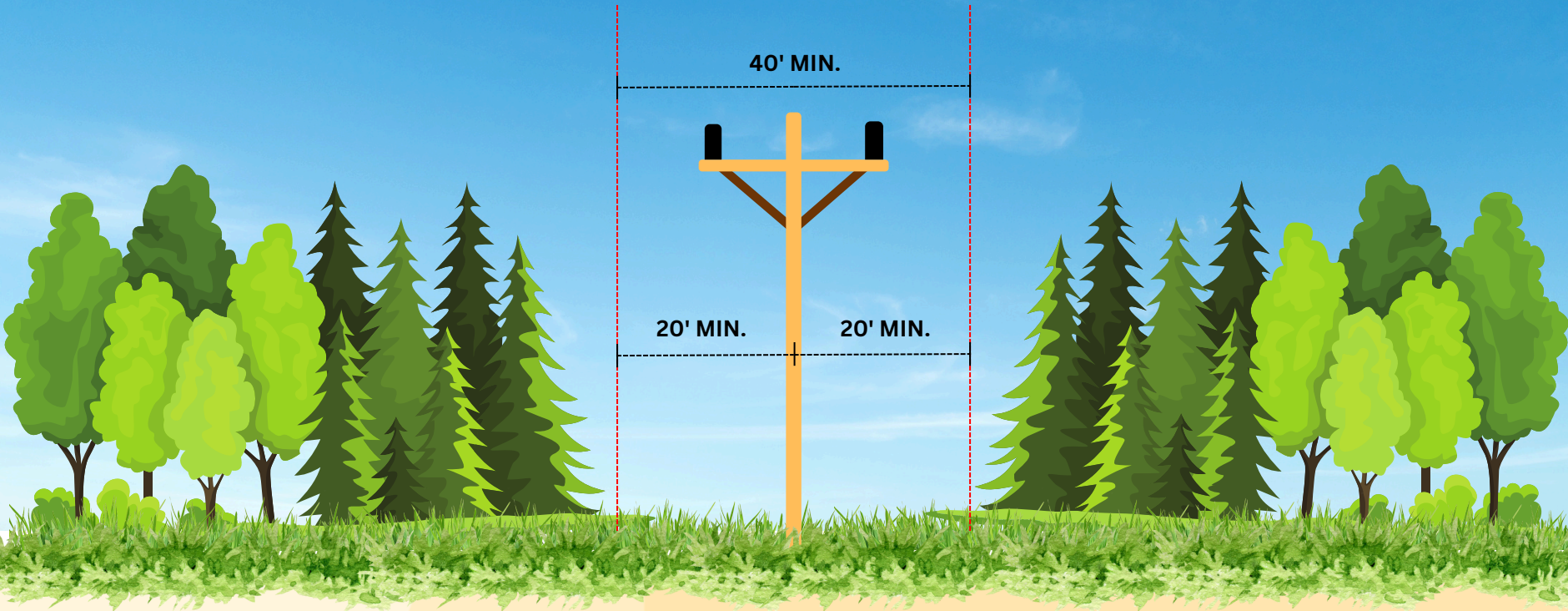


# Duck River Electric Membership Corporation Right-of-Way Clearance Guide



- **For new electrical construction, the member is responsible for the initial clearing and preparation of the 40' right-of-way.**
- To ensure safe and reliable electric service to all members, DREMC maintains a 40' right-of-way (20' on both sides from the center of the pole/line) on a rotational schedule.
- All trees, limbs, and other vegetation should be cleared from the 40' right-of-way, from ground to sky.

